

# PSAT™ 8/9

## Understanding Scores

UPDATED WITH ANSWER KEY AND  
SCORE CONVERSIONS

**2017-18**




---

# Contact Us


## CONTACTS FOR PARENTS AND STUDENTS


 psathelp@info.collegeboard.org


 866-433-7728  
+1-212-713-8105 (International)  
609-882-4118 (TTY)  
8 a.m. to 4 p.m. ET, Mon.–Fri.

## CONTACTS FOR EDUCATORS\*

 psat8/9@info.collegeboard.org

 888-477-PSAT (7728)  
+1-212-237-1335 (International)  
609-882-4118 (TTY)  
8 a.m. to 8 p.m. ET, Mon.–Fri.

 PSAT 8/9  
P.O. Box 6720  
Princeton, NJ 08541-6720

 610-290-8979

---

# The **PSAT 8/9** and the **SAT Suite** of Assessments

## What is the SAT Suite of Assessments?

The SAT® Suite of Assessments is an integrated system of tests that includes the SAT (for students in grades 11 and 12), the PSAT/NMSQT® and the PSAT™ 10 (for grades 10 and 11), and the PSAT™ 8/9 (for grades 8 and 9).

The tests measure the same skills and knowledge in grade-appropriate ways. They work together to show college readiness over time so educators, students, and parents can monitor student progress. Their content reflects the kinds of meaningful, engaging, and challenging work that students find in the best middle and high school courses taught today.

## What does the PSAT 8/9 measure?

The PSAT 8/9 measures the skills and knowledge that research shows are most essential for college and career readiness and success, at the level of content and skill appropriate for eighth and ninth grades. The Reading Test measures comprehension and reasoning skills and focuses on close reading of passages in a wide array of subject areas. The Writing and Language Test measures a range of skills including command of evidence, expression of ideas, and the use of standard English conventions in grammar and punctuation. The Math Test covers a range of math practices, with an emphasis on problem solving, modeling, using tools strategically, and using algebraic structure.

## How is the PSAT 8/9 scored?

Students receive a total score that is the sum of their scores on the two sections (Evidence-Based Reading and Writing, and Math).

To calculate section scores, we first compute the student's raw score—the number of questions correctly answered—for each section. Nothing is deducted for incorrect answers or for unanswered questions.

Next, we convert each of the raw section scores to a scaled score of 160 to 760. This conversion process adjusts for slight differences in difficulty among versions of the test and provides a score that is consistent across different versions. The scaled scores are the scores provided on score reports.

## How can I use the student score report?

The student score report clearly summarizes a student's current achievement levels and encourages next steps for academic progress.

You can aid students by going over their score reports and helping them understand what their scores mean. The details are below.

### CHECK-IN: ON TRACK FOR COLLEGE READINESS?

The score report includes an indicator for each section that shows whether the student's score meets the grade-level benchmark. These grade-level benchmarks allow students and educators to understand how students are progressing toward college readiness.

- If a student is meeting the benchmark for a section, remind them to continue to take rigorous courses and work hard to stay on track for college success.
- If a student is not meeting the benchmark for a section, connect the student to classroom work that is focused on areas that need improvement. Khan Academy® can help supplement this work.

## USE STUDENT SCORES TO IDENTIFY STRENGTHS AND WEAKNESSES:

- Use test scores, cross-test scores, and subscores to evaluate a student’s relative strengths and weaknesses and see what skills need practice.
- Use the red/yellow/green coding on test scores and subscores to evaluate how your student is performing relative to students who are meeting or exceeding the benchmark.
  - ◆ Highlight the areas in green as the student’s strengths.
  - ◆ Prioritize areas in the red range for additional work and practice.

## HELP STUDENTS DECIDE ON NEXT STEPS:

- Use the “Your Scores: Next Steps” page to identify the specific skills that the student should address.
- Work with your student to think of ways to develop each of the skills you have identified for focus and improvement.
- Encourage students to go online for more details and to link their College Board account to Khan Academy for a personalized study plan.

For further guidance on interpreting score reports, see the Professional Development modules for K–12 educators at [sat.org/k12](https://sat.org/k12).

## Score-Reporting Features

On pages 10–11 of this booklet, you’ll find an annotated sample score report that includes detailed explanations of the information students receive about their college readiness skills. Students age 13 and older can access their online reports to obtain more information and guidance, including personalized Khan Academy instruction and practice based on their results.

**NOTE:** *Score reports from the PSAT 8/9 administered in the fall include question-level details. An answer key to the fall PSAT 8/9 assessment will be posted to [psat.org/89-resources](https://psat.org/89-resources) once the fall window closes.*

The online reporting portal at [k12reports.collegeboard.org](https://k12reports.collegeboard.org) offers you an array of powerful tools to assess your students’ progress and plan instruction that delivers what they need. These tools include:

- Flexible reports that can be sorted and filtered by key demographics.
- Instructional planning support using test subscores in specific content areas, benchmarks, information for cross-subject tasks, and data for prescribing interventions when students are behind or ahead.
- Question Analysis Report that helps educators connect subscores to state standards, analyze students’ strengths and weaknesses, learn which mistakes were most common, and look for opportunities to reinforce skills.
- Access to the AP Potential™ tool to pinpoint students who are likely to succeed in more challenging courses.

---

# PSAT 8/9

## Scores

### Total Scores

The total score is the sum of the two section scores; its range is 240–1440.

### Section Scores

Your students receive scores in the range of 120–720 for each of two sections. The Evidence-Based Reading and Writing section score combines the scores for the Reading Test and the Writing and Language Test. The Math section score is derived from the Math Test score, including the calculator and no-calculator portions.

### Test Scores and Cross-Test Scores

The range for the following test scores is 6–36:

- Reading
- Writing and Language
- Math

The range for cross-test scores is also 6–36. These scores represent student performance on questions across the three tests that fall in the following domains:

- Analysis in History/Social Studies
- Analysis in Science

### Subscores

Subscores in the range of 1–15 offer feedback on student performance in the following skill areas:

- Command of Evidence
- Words in Context
- Expression of Ideas
- Standard English Conventions
- Heart of Algebra
- Problem Solving and Data Analysis

### Score Ranges

A student's ability is better represented by score ranges than points. Score ranges are derived from the standard error of measurement and show how much students' scores would likely vary if they took a different administration of the test under identical conditions.

From recent administrations of PSAT 8/9, these ranges are approximately:

- Total:  $\pm 40$  points
- Evidence-Based Reading and Writing:  $\pm 20$  points
- Math:  $\pm 30$  points
- Test Scores, subscores, and cross-test scores:  $\pm 2$  points

---

# Score Scales and Score Changes

## Can PSAT 8/9 scores be used to estimate PSAT 10 or PSAT/NMSQT scores?

The SAT Suite—from PSAT 8/9 through the SAT—uses a common score scale for the total, section, test, and cross-test scores. The ranges reported for each assessment reflect grade-level appropriateness within the common scale. Thus, while the total range for SAT is 400–1600, the total range for PSAT 8/9 is 240–1440.

This common score scale means that a student who took the PSAT 8/9 and received a Math section score of 500 would be expected to also get a 500 on the SAT or PSAT/NMSQT if they had taken either of those tests on that same day; a score of 500 represents the same level of academic achievement on all three assessments.

This also means that student growth is easy to see across the SAT Suite. If a student takes the PSAT 8/9 this year and receives a 500 as their Math section score, then takes the PSAT/NMSQT next year and earns a 550 Math section score, that student has shown a growth of 50 points, which likely resulted from hard work both in and out of school.

The total, section, test, and cross-test scores have been vertically scaled to allow the accurate measurement of growth from test to test. Encourage students to focus on the section scores if they are curious about what growth in their scores they can expect to see over the next year. We have provided a set of projected score ranges (only in online score reports) for students that reflect typical growth. Of course, a student's individual growth will be shaped by the courses taken and the practice they undertake between assessments.

Subscores are not on a vertical scale, and therefore comparing performance year-over-year should be done based on relative performance rather than calculating student growth across tests.

Students who wish to improve their performance on the PSAT 10 or PSAT/NMSQT should follow these guidelines:

- Develop academic skills through challenging coursework.
- Read extensively and develop strong writing skills.
- Practice the three math areas that are emphasized the most in the assessments.
- Take a practice test and upload their results to Khan Academy for personalized practice of the skills they need to improve. To learn more, visit [psat.org/practice](https://psat.org/practice).

# Benchmarks and Red/Yellow/Green Performance

## What are the PSAT 8/9 grade-level benchmarks?

The SAT Suite offers grade-level benchmarks that can be used to gauge whether students are on track for becoming college ready each year in grades 8–12. Grade-level benchmarks represent the section scores on each assessment that students should meet or exceed to be considered on track to be college ready.

The PSAT 8/9 reports separate benchmarks for eighth and ninth graders to help students understand their level of readiness for college and career training programs. The benchmarks help educators better understand how many and also which students are on track to have the skills necessary for college-entry, credit-bearing courses. Equipped with this information, educators can support students who need extra help while there is still time for improvement. Teachers can also accelerate the progress of students who meet or exceed the benchmarks.

### RECOMMENDED USES

Grade-level benchmarks can help educators:

- See how many students are on track for college and career readiness.
- Identify students who may need extra support while there is still time for improvement.
- Find students who may be ready for more challenging coursework.

Grade-level benchmarks should not be used to assign academic tracks, to discourage students from pursuing college, or to keep students from participating in challenging courses. Rather, the benchmarks are intended to help **all** students better prepare for life after high school.

## How are the benchmarks calculated?

The College and Career Readiness Benchmarks for the current SAT predict a 75% likelihood of achieving a C or higher in related first-year, credit-bearing college courses. The benchmarks are set at the section level, so there is a benchmark for Evidence-Based Reading and Writing and a benchmark for Math.

Score reports for the PSAT/NMSQT, PSAT 10, and PSAT 8/9 include grade-level benchmarks based on how students grow from year to year and based on the SAT benchmarks.

PSAT 8/9 Grade-Level Benchmarks		
	Evidence-Based Reading and Writing	Math
<b>8th Grade PSAT 8/9</b>	390	430
<b>9th Grade PSAT 8/9</b>	410	450

## What additional information is provided to help understand progress toward college readiness?

The student score report provides further context for understanding scores by showing a color-coded bar chart for the section scores. Students who met or exceeded the benchmark will be in the green portion of the score band. If students did not meet the benchmark but were close (within one year's growth), the score will be found in the yellow portion. Students who have a score indicating more than a year's growth below the grade-level benchmark will see their score in the red portion of the score band. Additionally, for each of the test scores and subscores, we have provided a color-coded guide to a student's relative strengths and weaknesses. The colors on each of these score scales represent the typical performance of students in their grade who met (green), approached (yellow), or were further away (red) from the benchmark.

# Percentiles

A student's percentile rank represents the percentage of students that score equal to or below the score the student obtained. For example, if a student's score is in the 75th percentile, 75% of a comparison group achieved scores at or below that student's score. Two types of percentile ranks, comparing student scores to two different reference populations, are provided in this publication for both total and section scores.

**Nationally representative percentiles** are derived from a research study of U.S. students in 8th or 9th grade, weighted to represent all U.S. students in those grades, regardless of whether they typically take the PSAT 8/9.

**User group percentiles** are based on the actual scores of students who took the PSAT 8/9 administered in 2015-16 and 2016-17.

## Percentiles for Total Scores

Score	8th GRADE		9th GRADE	
	PERCENTILES		PERCENTILES	
	Nationally Representative Sample	PSAT 8/9 User	Nationally Representative Sample	PSAT 8/9 User
1440	99+	99+	99+	99+
1430	99+	99+	99+	99+
1420	99+	99+	99+	99+
1410	99+	99+	99+	99+
1400	99+	99+	99+	99+
1390	99+	99+	99+	99+
1380	99+	99+	99+	99+
1370	99+	99+	99+	99+
1360	99+	99+	99+	99+
1350	99+	99+	99+	99+
1340	99+	99+	99+	99+
1330	99+	99+	99+	99+
1320	99+	99+	99+	99+
1310	99+	99+	99+	99
1300	99+	99+	99	99
1290	99+	99+	99	99
1280	99+	99+	99	99
1270	99+	99+	99	99
1260	99+	99+	99	99
1250	99+	99	99	98
1240	99+	99	98	98
1230	99	99	98	98
1220	99	99	98	98
1210	99	99	98	97
1200	99	99	97	97
1190	99	99	97	97
1180	99	99	96	96
1170	98	98	96	96
1160	98	98	95	95
1150	98	98	94	94
1140	98	98	94	94
1130	98	97	93	93
1120	97	97	92	92
1110	97	96	91	92
1100	97	96	90	91
1090	96	95	89	90
1080	96	95	88	89
1070	95	94	87	88
1060	94	94	86	86
1050	94	93	84	85
1040	93	92	83	84
1030	92	91	81	82
1020	91	90	80	81



## Percentiles for Total Scores (continued)

Score	8th GRADE		9th GRADE	
	PERCENTILES		PERCENTILES	
	Nationally Representative Sample	PSAT 8/9 User	Nationally Representative Sample	PSAT 8/9 User
1010	89	89	78	79
1000	88	88	76	78
990	86	87	74	76
980	85	86	72	74
970	83	85	70	73
960	80	83	68	71
950	78	82	66	69
940	77	80	64	67
930	75	79	62	65
920	73	77	60	63
910	71	75	57	61
900	69	73	55	59
890	67	72	53	57
880	65	70	50	55
870	62	68	48	52
860	60	65	46	50
850	57	63	43	48
840	55	61	41	46
830	52	59	38	44
820	50	56	36	41
810	47	54	33	39
800	44	51	31	37
790	41	48	29	35
780	38	45	26	32
770	35	43	24	30
760	32	40	22	28
750	29	37	20	26
740	26	34	18	23
730	23	31	16	21
720	21	28	14	19
710	19	26	12	17
700	16	23	11	15
690	14	20	9	14
680	13	18	8	12
670	11	16	7	10
660	9	14	5	9
650	8	12	4	8
640	6	10	4	6
630	5	8	3	5
620	4	7	2	4
610	3	6	2	4

Score	8th GRADE		9th GRADE	
	PERCENTILES		PERCENTILES	
	Nationally Representative Sample	PSAT 8/9 User	Nationally Representative Sample	PSAT 8/9 User
600	3	5	1	3
590	2	4	1	3
580	2	4	1	2
570	1	3	1	2
560	1	3	1-	1
550	1-	2	1-	1
540	1-	2	1-	1
530	1-	2	1-	1
520	1-	1	1-	1
510	1-	1	1-	1
500	1-	1	1-	1
490	1-	1	1-	1
480	1-	1	1-	1-
470	1-	1	1-	1-
460	1-	1	1-	1-
450	1-	1-	1-	1-
440	1-	1-	1-	1-
430	1-	1-	1-	1-
420	1-	1-	1-	1-
410	1-	1-	1-	1-
400	1-	1-	1-	1-
390	1-	1-	1-	1-
380	1-	1-	1-	1-
370	1-	1-	1-	1-
360	1-	1-	1-	1-
350	1-	1-	1-	1-
340	1-	1-	1-	1-
330	1-	1-	1-	1-
320	1-	1-	1-	1-
310	1-	1-	1-	1-
300	1-	1-	1-	1-
290	1-	1-	1-	1-
280	1-	1-	1-	1-
270	1-	1-	1-	1-
260	1-	1-	1-	1-
250	1-	1-	1-	1-
240	1-	1-	1-	1-
<b>Mean Score</b>	835	814	889	870
<b>Standard Deviation</b>	137	150	154	166

## Percentiles for Section Scores

8th GRADE					9th GRADE			
Score	Evidence-Based Reading and Writing		Math		Evidence-Based Reading and Writing		Math	
	PERCENTILES		PERCENTILES		PERCENTILES		PERCENTILES	
	Nationally Representative Sample	PSAT 8/9 User	Nationally Representative Sample	PSAT 8/9 User	Nationally Representative Sample	PSAT 8/9 User	Nationally Representative Sample	PSAT 8/9 User
720	99+	99+	99+	99+	99+	99+	99+	99+
710	99+	99+	99+	99+	99+	99+	99+	99+
700	99+	99+	99+	99+	99+	99+	99+	99+
690	99+	99+	99+	99+	99+	99+	99+	99+
680	99+	99+	99+	99+	99+	99+	99+	99
670	99+	99+	99+	99+	99+	99+	99	99
660	99+	99+	99+	99+	99	99	99	99
650	99+	99+	99+	99+	99	99	99	99
640	99	99	99	99	99	99	99	98
630	99	99	99	99	98	98	98	98
620	99	99	99	99	97	97	98	98
610	99	99	99	99	96	96	97	97
600	98	98	99	99	95	95	97	96
590	98	98	99	98	94	94	96	96
580	97	97	99	98	93	93	95	95
570	96	96	98	97	91	91	94	94
560	95	95	98	97	89	89	92	92
550	94	94	97	96	87	87	90	91
540	92	92	96	95	85	85	88	90
530	91	91	94	94	82	82	86	88
520	89	89	93	93	79	80	83	85
510	86	87	91	91	76	77	80	83
500	84	85	88	89	73	74	77	80
490	81	82	85	87	69	71	74	76
480	78	80	83	84	66	67	69	73
470	74	77	79	81	62	64	65	69
460	71	74	75	77	59	61	60	64
450	67	71	69	73	55	57	55	60
440	63	68	63	68	51	53	49	55
430	58	64	58	64	47	50	44	51
420	54	60	53	60	42	46	39	47
410	49	56	50	55	38	42	35	42

## Percentiles for Section Scores (continued)

Score	8th GRADE				9th GRADE			
	Evidence-Based Reading and Writing		Math		Evidence-Based Reading and Writing		Math	
	PERCENTILES		PERCENTILES		PERCENTILES		PERCENTILES	
	Nationally Representative Sample	PSAT 8/9 User	Nationally Representative Sample	PSAT 8/9 User	Nationally Representative Sample	PSAT 8/9 User	Nationally Representative Sample	PSAT 8/9 User
400	44	52	46	49	33	38	32	37
390	39	47	38	44	29	34	27	33
380	33	42	30	38	25	29	21	28
370	27	37	26	32	21	25	18	24
360	22	32	22	26	17	21	15	19
350	17	26	19	23	13	18	12	16
340	13	21	16	19	10	14	10	14
330	9	16	13	15	7	11	8	10
320	6	12	11	12	4	8	6	8
310	4	9	8	9	3	5	4	7
300	3	6	6	7	2	4	3	5
290	2	5	5	6	1	3	2	4
280	1	3	3	4	1-	2	2	3
270	1	3	2	3	1-	1	1	2
260	1	2	2	3	1-	1	1	2
250	1-	2	2	2	1-	1	1	2
240	1-	1	1	2	1-	1	1-	1
230	1-	1	1	1	1-	1-	1-	1
220	1-	1	1-	1	1-	1-	1-	1
210	1-	1	1-	1	1-	1-	1-	1
200	1-	1-	1-	1	1-	1-	1-	1-
190	1-	1-	1-	1	1-	1-	1-	1-
180	1-	1-	1-	1-	1-	1-	1-	1-
170	1-	1-	1-	1-	1-	1-	1-	1-
160	1-	1-	1-	1-	1-	1-	1-	1-
150	1-	1-	1-	1-	1-	1-	1-	1-
140	1-	1-	1-	1-	1-	1-	1-	1-
130	1-	1-	1-	1-	1-	1-	1-	1-
120	1-	1-	1-	1-	1-	1-	1-	1-
Mean Score	422	408	414	406	446	439	443	432
Standard Deviation	76	84	75	79	85	91	81	87

# Answer Key

Reading Test	
SECTION 1	
1	D
2	D
3	A
4	D
5	B
6	C
7	B
8	B
9	D
10	B
11	D
12	C
13	D
14	B
15	A
16	D
17	D
18	C
19	A
20	C
21	A
22	D
23	B
24	B
25	C
26	D
27	B
28	A
29	C
30	B
31	A
32	B
33	C
34	B
35	D
36	C
37	A
38	D
39	B
40	B
41	B
42	A

Writing and Language Test	
SECTION 2	
1	C
2	B
3	C
4	A
5	D
6	A
7	D
8	B
9	C
10	B
11	A
12	A
13	B
14	D
15	B
16	A
17	C
18	A
19	D
20	C
21	B
22	D
23	C
24	D
25	C
26	A
27	B
28	C
29	D
30	D
31	D
32	A
33	B
34	B
35	C
36	D
37	D
38	C
39	C
40	C

Math Test – No Calculator	
SECTION 3	
1	C
2	B
3	A
4	C
5	A
6	D
7	B
8	A
9	A
10	D
11	1
12	7
13	2

Math Test – Calculator	
SECTION 4	
1	A
2	C
3	B
4	C
5	C
6	A
7	B
8	B
9	C
10	D
11	C
12	D
13	A
14	A
15	D
16	B
17	D
18	B
19	C
20	C
21	D
22	24
23	8
24	9926
25	3474

# Score Conversions

Score conversions show how raw scores are converted into test scores, cross-test scores, and subscores.

## IMPORTANT TO NOTE

- The section score for the Evidence-Based Reading and Writing section is calculated by adding the Reading Test score to the Writing and Language Test score and multiplying that figure by 10.
- The section score for the Math section is calculated by multiplying the Math Test score by 20.

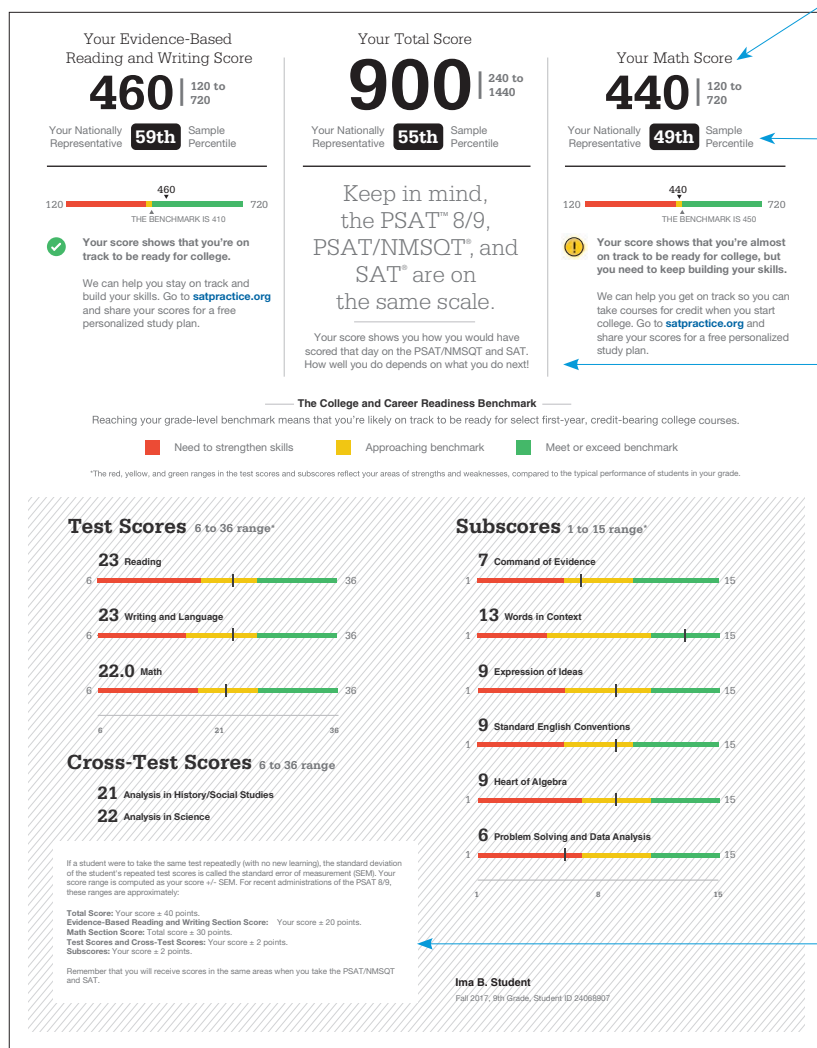
## Score Conversions

Raw Score (# of correct answers)	Reading Test Score	Writing and Language Test Score	Math Test Score
42	36		
41	35		
40	34	36	
39	33	35	
38	32	34	720
37	31	33	700
36	30	32	680
35	29	31	670
34	29	30	650
33	28	29	630
32	27	28	610
31	27	28	600
30	26	27	580
29	25	26	570
28	25	25	560
27	24	25	550
26	24	24	540
25	23	23	530
24	22	23	520
23	22	22	510
22	21	21	500
21	21	21	490
20	20	20	480
19	20	20	470
18	19	19	460
17	19	19	450
16	19	18	440
15	18	17	430
14	18	17	420
13	17	16	400
12	17	16	390
11	16	15	380
10	16	15	360
9	15	14	340
8	15	14	320
7	14	13	300
6	13	13	280
5	12	11	250
4	11	10	230
3	10	9	200
2	8	8	180
1	7	7	150
0	6	6	120

# The PSAT 8/9 Score Report

## A Case Study: Ima B. Student's PSAT 8/9 Score Report

Take a look at Ima B. Student's sample score report below and on the next page. Use the corresponding information to help you interpret your student's PSAT 8/9 Score Report.



Score Report (Page 1 of 3)

### What are Ima's scores?

Ima's Evidence-Based Reading and Writing score is 460, and her Math score is 440. In Evidence-Based Reading and Writing, Ima's score exceeds the benchmark, and she is on track for college readiness. In Math, Ima is close to meeting the benchmark. Test scores, cross-test scores, and subscores can give Ima a better understanding of areas to work on.

### What are Ima's score percentiles?

Because Ima is in the ninth grade, the percentiles compare her scores with those of all ninth graders in the nation. Ima scored as well or better than 59% of a nationally representative group of ninth-grade students in Evidence-Based Reading and Writing. In Math, she scored as well or better than 49% of a nationally representative group of freshmen. Additional percentiles are available in Ima's online score report.

### How will Ima do on the SAT?

The PSAT 8/9, PSAT/NMSQT, and SAT are scored on a common scale. Therefore, if Ima had taken the SAT instead of the PSAT 8/9 on the same test date, she would have received the same score. By the time Ima takes the SAT, she will likely have had additional learning from school and practice. Her PSAT 8/9 results can help Ima focus her efforts in high school to be better prepared for the SAT.

### What are Ima's score ranges?

Ima's score would likely vary if she took the test repeatedly under the same conditions, even if her skill level remained the same. Her score report indicates her estimated score ranges.

## Your Scores: Next Steps

Additional skills and improvement suggestions can be found in your online score report.

Your score indicates that you are already likely able to:

- Read a moderately challenging passage closely to draw a reasonable inference
- Determine the best textual evidence for an inference when both evidence and inference are relatively obvious and direct (e.g., a clearly stated fact as evidence for a simple inference)
- Determine the central idea or theme of a moderately challenging passage
- Determine a straightforward relationship between information, ideas, or people depicted in a passage (e.g., establishing a cause-effect, comparison-contrast, or sequential relationship)
- Determine the main purpose or effect of an author's word choice in a moderately challenging passage

### Reading Test

23

6 to 36

Improve your skills by focusing on the following suggestions:

- When you are reading complex texts, look closely at the key information and ideas, and then use them to help you determine the central idea or theme the authors want to convey.
- When you read, think about how a particular part of a text, such as a sentence, relates to and furthers the purpose of the text as a whole. Consider, for example, whether a certain detail illustrates a larger idea or provides a fact in support of it.
- When reading complex texts, look for explicit statements of purpose; when those cannot be found, infer the real purpose seems to diverge from the stated purpose; use close reading strategies and such clues as word and phrase choice, emphasis, and tone, to figure out an author's likely intent.

### Writing and Language Test

23

6 to 36

- Use supporting information to achieve a simple purpose (e.g., providing a short list of examples introduced by "for instance")
- Recognize and correct an obviously inappropriate shift in verb tense (e.g., using present tense when the context clearly calls for past tense)
- Distinguish between singular and plural possessive nouns and between plural and possessive nouns
- Appropriately punctuate items in a series (e.g., a three-item series of nouns with accompanying adjectives)
- Use commas to set off a simple nonrestrictive element (e.g., a phrase describing the person just named)

- In drafting and revising, use vocabulary knowledge and an understanding of particular contexts to make effective word and phrase choices.
- In revising, eliminate wordiness or redundancy within a sentence, such as when adjectives with the same meaning or very similar meanings (e.g., "fast" and "quick") are used to describe the same thing.
- In drafting and revising, maintain a consistent style and tone within a text, revising language that is clearly too informal or formal for the context.
- In revising, experiment with various ways of combining sentences to achieve specific purposes, such as improving logic, clarity, or the flow of ideas.

### Math Test

22.0

6 to 36

- Create an expression or equation in one variable that models a context
- Use information about a directly proportional relationship to describe the graph of the relationship
- Solve problems that involve converting units within the same measurement system
- Solve simple problems involving percent
- Solve simple problems using area and volume formulas
- Create a linear expression or equation in two variables that models a context

- Find simple and compound probabilities.
- Analyze scatterplot data to estimate a line of best fit.
- When solving geometric problems, use properties about complementary, supplementary, right, corresponding, vertical, alternate interior, and alternate exterior angles.
- When solving systems of two linear equations, determine the most efficient strategy based on the current form of the equations. Some equations are more efficient to solve by combination or elimination, while others can be more efficiently solved by substitution or graphing. Transform equations to solve when appropriate.
- When solving a system of linear equations in two variables, interpret an ordered pair  $(x, y)$  as the solution.

## Get more next steps online

[studentscores.collegeboard.org](http://studentscores.collegeboard.org)



**Free Practice**  
Develop the skills you'll need for high school and beyond with Khan Academy—free online on [satpractice.org](http://satpractice.org).



**Core Coursework**  
Use your results to create a core coursework plan in high school.



**Explore**  
Discover majors and careers that connect to the things you care about most with Roadstrip Nation.

Ima B. Student Fall 2017, 9th Grade

## How can Ima improve her academic skills?

### Your Scores: Next Steps

are based on her test scores, and the general skills that similarly performing students understand. Ima can see which skills she performed well on and which she needs to improve. Ima can sign in to the full report online to see additional skills and improvement steps. (Note that she must be at least 13 years old to do so.) Ima can also link her account to Khan Academy for personalized practice recommendations.

## What are Ima's next steps?

Under **Get more next steps online**, Ima is directed to [studentscores.collegeboard.org](http://studentscores.collegeboard.org) to learn how to prepare for the SAT with Khan Academy and use her results to create a challenging coursework plan in high school.

## Your Question-Level Feedback

### Reading

Question #	Your Answer	Correct	Difficulty	Subscore	Cross-Test Score
1	A	✓	Medium	WC, EOI	HSS
2	A	✓	Easy	SEC	
3	A	✓	Easy	SEC	
4	C	✗	Easy	EOI	HSS
5	B	✓	Easy	COE, EOI	HSS
6	B	✓	Easy	EOI	HSS
7	D	✓	Easy	WC, EOI	HSS
8	B	✓	Easy	SEC	
9	D	✗	Easy	SEC	
10	C	✓	Easy	COE, EOI	HSS
11	D	✓	Easy	HSS	
12	C	✓	Easy	COE, EOI	SCI
13	C	✓	Easy	SEC	
14	A	✓	Easy	WC, EOI	SCI
15	C	✓	Easy	EOI	SCI
16	B	✓	Easy	SEC	
17	A	✓	Easy	EOI	SCI
18	C	✓	Easy	COE, EOI	SCI
19	D	✓	Easy	WC, EOI	SCI
20	B	✓	Easy	SEC	
21	D	✓	Easy	SEC	
22	B	✓	Easy	COE, EOI	SCI
23	D	✓	Easy	WC, EOI	SCI
24	D	✓	Easy	WC, EOI	SCI
25	D	✓	Easy	EOI	SCI
26	A	✓	Easy	SEC	
27	C	✓	Easy	EOI	SCI
28	A	✓	Easy	COE, EOI	HSS
29	C	✓	Easy	COE, EOI	HSS
30	A	✓	Easy	SEC	
31	C	✓	Easy	SEC	
32	D	✓	Easy	EOI	HSS
33	C	✓	Easy	SEC	
34	A	✓	Easy	COE, EOI	HSS
35	A	✓	Easy	WC, EOI	HSS
36	B	✓	Easy	COE, EOI	HSS
37	B	✓	Easy	SEC	
38	D	✓	Easy	SEC	
39	D	✓	Easy	WC, EOI	HSS
40	D	✓	Easy	EOI	HSS
41	D	✓	Easy	SCI	
42	A	✓	Easy	COE, EOI	HSS

### Writing and Language

Question #	Your Answer	Correct	Difficulty	Subscore	Cross-Test Score
1	A	✓	Easy	WC, EOI	HSS
2	C	✓	Easy	SEC	
3	A	✓	Easy	SEC	
4	C	✗	Easy	EOI	HSS
5	B	✓	Easy	COE, EOI	HSS
6	C	✓	Easy	EOI	HSS
7	D	✗	Easy	WC, EOI	HSS
8	B	✓	Easy	SEC	
9	D	✗	Easy	SEC	
10	C	✓	Easy	COE, EOI	HSS
11	B	✓	Easy	SEC	
12	C	✓	Easy	COE, EOI	SCI
13	B	✓	Easy	SEC	
14	A	✓	Easy	WC, EOI	SCI
15	C	✓	Easy	EOI	SCI
16	B	✓	Easy	SEC	
17	A	✓	Easy	EOI	SCI
18	C	✓	Easy	COE, EOI	SCI
19	D	✓	Easy	WC, EOI	SCI
20	B	✓	Easy	SEC	
21	D	✓	Easy	SEC	
22	C	✓	Easy	COE, EOI	SCI
23	A	✓	Easy	WC, EOI	SCI
24	D	✓	Easy	WC, EOI	SCI
25	D	✓	Easy	EOI	SCI
26	A	✓	Easy	SEC	
27	C	✓	Easy	EOI	SCI
28	B	✓	Easy	COE, EOI	HSS
29	C	✓	Easy	COE, EOI	HSS
30	A	✓	Easy	SEC	
31	C	✓	Easy	SEC	
32	C	✓	Easy	EOI	HSS
33	D	✓	Easy	SEC	
34	A	✓	Easy	COE, EOI	HSS
35	D	✓	Easy	WC, EOI	HSS
36	B	✓	Easy	COE, EOI	HSS
37	A	✓	Easy	SEC	
38	D	✓	Easy	SEC	
39	C	✓	Easy	WC, EOI	HSS
40	C	✓	Easy	EOI	HSS

### Math Test-Calculator

Question #	Your Answer	Correct	Difficulty	Subscore	Cross-Test Score
1	A	✓	Easy	HQA	
2	C	✓	Easy	HQA	
3	C	✓	Easy	HQA	
4	D	✓	Easy	PSD	
5	B	✓	Easy	PSD	SCI
6	C	✓	Easy	PSD	SCI
7	D	✗	Easy	PSD	SCI
8	B	✓	Easy	HQA	
9	B	✓	Easy	PSD	SCI
10	B	✓	Easy	PSD	SCI
11	C	✓	Easy	HQA	
12	D	✓	Easy	PSD	HSS
13	A	✓	Easy	PSD	HSS
14	A	✓	Easy	HQA	
15	C	✓	Easy	PSD	HSS
16	D	✓	Easy	PSD	HSS
17	D	✓	Easy	PSD	SCI
18	C	✓	Easy	PSD	SCI
19	C	✓	Easy	PSD	HSS
20	B	✓	Easy	HQA	
21	A	✓	Easy	HQA	HSS
22	5, 12	✓	Easy	HQA	
23	100	✓	Easy	HQA	
24	27	✓	Easy	PSD	HSS
25	30	✓	Easy	PSD	HSS

### Math Test-No Calculator

Question #	Your Answer	Correct	Difficulty	Subscore	Cross-Test Score
1	A	✓	Easy	HQA	
2	B	✓	Easy	HQA	
3	B	✓	Easy	HQA	
4	A	✓	Easy	HQA	
5	C	✓	Easy	HQA	
6	D	✓	Easy	HQA	
7	C	✓	Easy	HQA	SCI
8	A	✓	Easy	HQA	HSS
9	D	✓	Easy	HQA	
10	A	✓	Easy	HQA	
11	7	✓	Easy	HQA	
12	15	✓	Easy	HQA	
13	15, 32	✓	Easy	HQA	

Access Code  
A02670146P

See the questions, and the answer explanations, online at [studentscores.collegeboard.org](http://studentscores.collegeboard.org)

### Subscore

- COE: Command of Evidence
- WC: Words in Context
- EOI: Expression of Ideas
- SEC: Standard English Conventions
- HQA: Heart of Algebra
- PSD: Problem Solving and Data Analysis

### Key

- ✓ Correct
- ✗ Omitted
- U Unscorable
- X Multi-Grid/Incorrect
- Easy
- Medium
- Hard

### Cross-Test Score

- HSS: Analysis in History/Social Studies
- SCI: Analysis in Science

00965-005 100041904

© 2017 The College Board. College Board, SAT, and the acorn logo are registered trademarks of the College Board. PSAT is a trademark owned by the College Board. PSAT/NMSQT is a registered trademark of the College Board and National Merit Scholarship Corporation. All other marks are the property of their respective owners. Visit the College Board on the web: [collegeboard.org](http://collegeboard.org)

Khan Academy is a registered trademark in the United States and other jurisdictions.

Ima B. Student Fall 2017, 9th Grade

## Score Report (Page 2 of 3)

## How can Ima measure her progress?

When she becomes a sophomore, Ima can take the PSAT/NMSQT or PSAT 10 to measure the progress she's made since she took the PSAT 8/9. She can continue to take advantage of practice resources by visiting [satpractice.org](http://satpractice.org).

## How can Ima learn from her answers?

The score report is designed to help Ima see how she performed by showing the skill areas covered (subscore and cross-test score) and whether the answer was correct, incorrect, or omitted.

# The PSAT 8/9 Sample Score Report

**Hi, Ima B. Student**

School Name: John F. Kennedy High School, School Code: 123456  
Fall 2017, 9th Grade  
Student ID: 24068907  
Optional Code: 00  
Access Code: A02670146P  
College Board ID: 12345678

**PSAT™ 8/9**  CollegeBoard

## Your Score Report

Get your full report online  
[studentscores.collegeboard.org](https://studentscores.collegeboard.org)

Access Code **A02670146P**



### Free Practice

Develop the skills you'll need for high school and beyond with Khan Academy®—free online on [satpractice.org](https://satpractice.org).



### Core Coursework

Use your results to create a core coursework plan in high school.



### Explore

Discover majors and careers that connect to the things you care about most with Roadtrip Nation®.

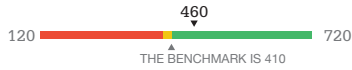


# The PSAT 8/9 Sample Score Report (continued)

Your Evidence-Based Reading and Writing Score

**460** | 120 to 720

Your Nationally Representative **59th** Sample Percentile



**✓** Your score shows that you're on track to be ready for college.

We can help you stay on track and build your skills. Go to [satpractice.org](http://satpractice.org) and share your scores for a free personalized study plan.

Your Total Score

**900** | 240 to 1440

Your Nationally Representative **55th** Sample Percentile

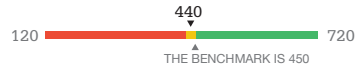
Keep in mind, the PSAT™ 8/9, PSAT/NMSQT®, and SAT® are on the same scale.

Your score shows you how you would have scored that day on the PSAT/NMSQT and SAT. How well you do depends on what you do next!

Your Math Score

**440** | 120 to 720

Your Nationally Representative **49th** Sample Percentile



**!** Your score shows that you're almost on track to be ready for college, but you need to keep building your skills.

We can help you get on track so you can take courses for credit when you start college. Go to [satpractice.org](http://satpractice.org) and share your scores for a free personalized study plan.

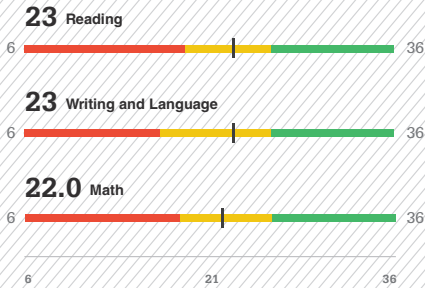
### The College and Career Readiness Benchmark

Reaching your grade-level benchmark means that you're likely on track to be ready for select first-year, credit-bearing college courses.

- Need to strengthen skills
- Approaching benchmark
- Meet or exceed benchmark

\*The red, yellow, and green ranges in the test scores and subscores reflect your areas of strengths and weaknesses, compared to the typical performance of students in your grade.

### Test Scores 6 to 36 range\*



### Cross-Test Scores 6 to 36 range

- 21** Analysis in History/Social Studies
- 22** Analysis in Science

If a student were to take the same test repeatedly (with no new learning), the standard deviation of the student's repeated test scores is called the standard error of measurement (SEM). Your score range is computed as your score +/- SEM. For recent administrations of the PSAT 8/9, these ranges are approximately:

- Total Score:** Your score ± 40 points.
- Evidence-Based Reading and Writing Section Score:** Your score ± 20 points.
- Math Section Score:** Total score ± 30 points.
- Test Scores and Cross-Test Scores:** Your score ± 2 points.
- Subscores:** Your score ± 2 points.

Remember that you will receive scores in the same areas when you take the PSAT/NMSQT and SAT.

### Subscores 1 to 15 range\*



**Ima B. Student**

Fall 2017, 9th Grade, Student ID 24068907

# The PSAT 8/9 Sample Score Report (continued)

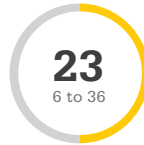
## Your Scores: Next Steps

Additional skills and improvement suggestions can be found in your online score report.

Your score indicates that you are already likely able to:

- Read a moderately challenging passage closely to draw a reasonable inference
- Determine the best textual evidence for an inference when both evidence and inference are relatively obvious and direct (e.g., a clearly stated fact as evidence for a simple inference)
- Determine the central idea or theme of a moderately challenging passage
- Determine a straightforward relationship between information, ideas, or people depicted in a passage (e.g., establishing a cause-effect, comparison-contrast, or sequential relationship)
- Determine the main purpose or effect of an author's word choice in a moderately challenging passage

Reading Test



Improve your skills by focusing on the following suggestions:

- When you are reading complex texts, look closely at the key information and ideas, and then use them to help you determine the central idea or theme the authors want to convey.
- When you read, think about how a particular part of a text, such as a sentence, relates to and furthers the purpose of the text as a whole. Consider, for example, whether a certain detail illustrates a larger idea or provides a fact in support of it.
- When reading complex texts, look for explicit statements of purpose; when those cannot be found (or when the real purpose seems to diverge from the stated purpose), use close reading strategies and such clues as word and phrase choice, emphasis, and tone, to figure out an author's likely intent.

## Writing and Language Test

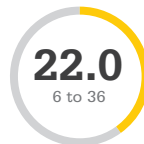
- Use supporting information to achieve a simple purpose (e.g., providing a short list of examples introduced by "for instance")
- Recognize and correct an obviously inappropriate shift in verb tense (e.g., using present tense when the context clearly calls for past tense)
- Distinguish between singular and plural possessive nouns and between plural and possessive nouns
- Appropriately punctuate items in a series (e.g., a three-item series of nouns with accompanying adjectives)
- Use commas to set off a simple nonrestrictive element (e.g., a phrase describing the person just named)



- In drafting and revising, use vocabulary knowledge and an understanding of particular contexts to make effective word and phrase choices.
- In revising, eliminate wordiness or redundancy within a sentence, such as when adjectives with the same meaning or very similar meanings (e.g., "fast" and "quick") are used to describe the same thing.
- In drafting and revising, maintain a consistent style and tone within a text, revising language that is clearly too informal or formal for the context.
- In revising, experiment with various ways of combining sentences to achieve specific purposes, such as improving logic, clarity, or the flow of ideas.

## Math Test

- Create an expression or equation in one variable that models a context
- Use information about a directly proportional relationship to describe the graph of the relationship
- Solve problems that involve converting units within the same measurement system
- Solve simple problems involving percent
- Solve simple problems using area and volume formulas
- Create a linear expression or equation in two variables that models a context



- Find simple and compound probabilities.
- Analyze scatterplot data to estimate a line of best fit.
- When solving geometric problems, use properties about complementary, supplementary, right, corresponding, vertical, alternate interior, and alternate exterior angles.
- When solving systems of two linear equations, determine the most efficient strategy based on the current form of the equations. Some equations are more efficient to solve by combination or elimination, while others can be more efficiently solved by substitution or graphing. Transform equations to solve when appropriate.
- When solving a system of linear equations in two variables, interpret an ordered pair (x, y) as the solution.

## Get more next steps online

[studentscores.collegeboard.org](https://studentscores.collegeboard.org)



### Free Practice

Develop the skills you'll need for high school and beyond with Khan Academy – free online on [satpractice.org](https://satpractice.org).



### Core Coursework

Use your results to create a core coursework plan in high school.



### Explore

Discover majors and careers that connect to the things you care about most with Roadtrip Nation.

Ima B. Student Fall 2017, 9th Grade

# The PSAT 8/9 Sample Score Report (continued)

## Your Question-Level Feedback

### Reading

Question #	Correct	Your Answer	Difficulty	Subscore	Cross-Test Score
1	A	✓	■ ■ ■ ■		
2	C	✓	■ ■ ■ ■		
3	B	A	■ ■ ■ ■		
4	C	✓	■ ■ ■ ■	WIC	
5	C	✓	■ ■ ■ ■	WIC	
6	A	B	■ ■ ■ ■		
7	B	A	■ ■ ■ ■	COE	
8	D	✓	■ ■ ■ ■		
9	C	✓	■ ■ ■ ■	COE	HSS
10	B	✓	■ ■ ■ ■	WIC	HSS
11	D	✓	■ ■ ■ ■	WIC	HSS
12	A	○	■ ■ ■ ■		HSS
13	C	B	■ ■ ■ ■	COE	HSS
14	A	B	■ ■ ■ ■	COE	HSS
15	D	✓	■ ■ ■ ■		HSS
16	C	B	■ ■ ■ ■		HSS
17	B	✓	■ ■ ■ ■		SCI
18	A	✓	■ ■ ■ ■	WIC	SCI
19	C	✓	■ ■ ■ ■	COE	SCI
20	D	B	■ ■ ■ ■	WIC	SCI
21	C	✓	■ ■ ■ ■		SCI
22	B	C	■ ■ ■ ■	COE	SCI
23	D	✓	■ ■ ■ ■		SCI
24	D	C	■ ■ ■ ■		SCI
25	D	✓	■ ■ ■ ■		SCI
26	A	C	■ ■ ■ ■	COE	HSS
27	D	C	■ ■ ■ ■	COE	HSS
28	A	✓	■ ■ ■ ■		HSS
29	C	A	■ ■ ■ ■	WIC	HSS
30	B	A	■ ■ ■ ■		HSS
31	C	✓	■ ■ ■ ■		HSS
32	D	✓	■ ■ ■ ■		HSS
33	C	A	■ ■ ■ ■		HSS
34	B	✓	■ ■ ■ ■	WIC	HSS
35	A	✓	■ ■ ■ ■		SCI
36	B	A	■ ■ ■ ■	WIC	SCI
37	B	✓	■ ■ ■ ■	WIC	SCI
38	C	✓	■ ■ ■ ■		SCI
39	D	B	■ ■ ■ ■	COE	SCI
40	D	✓	■ ■ ■ ■		SCI
41	D	✓	■ ■ ■ ■		SCI
42	A	○	■ ■ ■ ■	COE	SCI

### Writing and Language

Question #	Correct	Your Answer	Difficulty	Subscore	Cross-Test Score
1	A	✓	■ ■ ■ ■	WIC, EOI	HSS
2	A	✓	■ ■ ■ ■	SEC	
3	A	✓	■ ■ ■ ■	SEC	
4	C	A	■ ■ ■ ■	EOI	HSS
5	B	D	■ ■ ■ ■	COE, EOI	HSS
6	B	A	■ ■ ■ ■	EOI	HSS
7	D	✓	■ ■ ■ ■	WIC, EOI	HSS
8	B	C	■ ■ ■ ■	SEC	
9	D	X	■ ■ ■ ■	SEC	
10	C	✓	■ ■ ■ ■	COE, EOI	HSS
11	B	○	■ ■ ■ ■	SEC	
12	C	✓	■ ■ ■ ■	COE, EOI	SCI
13	B	✓	■ ■ ■ ■	SEC	
14	A	✓	■ ■ ■ ■	WIC, EOI	SCI
15	C	D	■ ■ ■ ■	EOI	SCI
16	B	✓	■ ■ ■ ■	SEC	
17	A	D	■ ■ ■ ■	EOI	SCI
18	C	D	■ ■ ■ ■	COE, EOI	SCI
19	D	✓	■ ■ ■ ■	WIC, EOI	SCI
20	B	✓	■ ■ ■ ■	SEC	
21	D	✓	■ ■ ■ ■	SEC	
22	C	✓	■ ■ ■ ■	SEC	
23	A	✓	■ ■ ■ ■	WIC, EOI	
24	D	✓	■ ■ ■ ■	WIC, EOI	
25	D	A	■ ■ ■ ■	EOI	
26	A	✓	■ ■ ■ ■	SEC	
27	C	A	■ ■ ■ ■	EOI	
28	B	✓	■ ■ ■ ■	COE, EOI	
29	C	✓	■ ■ ■ ■	COE, EOI	
30	A	B	■ ■ ■ ■	SEC	
31	C	✓	■ ■ ■ ■	SEC	
32	C	B	■ ■ ■ ■	EOI	
33	D	✓	■ ■ ■ ■	SEC	
34	A	✓	■ ■ ■ ■	COE, EOI	
35	D	✓	■ ■ ■ ■	WIC, EOI	
36	B	C	■ ■ ■ ■	COE, EOI	
37	A	✓	■ ■ ■ ■	SEC	
38	D	○	■ ■ ■ ■	SEC	
39	C	✓	■ ■ ■ ■	WIC, EOI	
40	C	B	■ ■ ■ ■	EOI	

### Math Test—Calculator

Question #	Correct	Your Answer	Difficulty	Subscore	Cross-Test Score
1	A	B	■ ■ ■ ■	PSD	
2	C	✓	■ ■ ■ ■	HOA	
3	C	B	■ ■ ■ ■	PSD	
4	D	○	■ ■ ■ ■	PSD	
5	B	C	■ ■ ■ ■	PSD	SCI
6	C	✓	■ ■ ■ ■	PSD	
7	D	X	■ ■ ■ ■	PSD	SCI
8	B	✓	■ ■ ■ ■	HOA	
9	B	✓	■ ■ ■ ■	PSD	
10	D	C	■ ■ ■ ■	PSD	
11	C	○	■ ■ ■ ■	PSD	SCI

Question #	Correct	Your Answer	Difficulty	Subscore	Cross-Test Score
12	C	A	■ ■ ■ ■	HOA	
13	A	✓	■ ■ ■ ■		
14	B	A	■ ■ ■ ■	HOA	
15	C	✓	■ ■ ■ ■	PSD	
16	D	✓	■ ■ ■ ■	PSD	HSS
17	D	A	■ ■ ■ ■	PSD	SCI
18	C	○	■ ■ ■ ■	PSD	SCI
19	C	✓	■ ■ ■ ■	PSD	HSS
20	B	D	■ ■ ■ ■	HOA	
21	A	C	■ ■ ■ ■	HOA	HSS

Question #	Correct	Your Answer	Difficulty	Subscore	Cross-Test Score
22	.5, 1/2	✓	■ ■ ■ ■	HOA	
23	100	✓	■ ■ ■ ■	HOA	
24	27	✓	■ ■ ■ ■	PSD	HSS
25	30	○	■ ■ ■ ■	PSD	HSS

### Math Test—No Calculator

Question #	Correct	Your Answer	Difficulty	Subscore	Cross-Test Score
1	A	C	■ ■ ■ ■	HOA	
2	B	○	■ ■ ■ ■	HOA	
3	B	C	■ ■ ■ ■	HOA	
4	A	✓	■ ■ ■ ■		
5	C	B	■ ■ ■ ■	HOA	

Question #	Correct	Your Answer	Difficulty	Subscore	Cross-Test Score
6	D	B	■ ■ ■ ■		
7	C	B	■ ■ ■ ■		SCI
8	A	✓	■ ■ ■ ■	HOA	HSS
9	D	✓	■ ■ ■ ■	HOA	
10	A	B	■ ■ ■ ■		

Question #	Correct	Your Answer	Difficulty	Subscore	Cross-Test Score
11	7	6	■ ■ ■ ■		
12	15	✓	■ ■ ■ ■	HOA	
13	1.5, 3/2	✓	■ ■ ■ ■	HOA	

Access Code  
A02670146P

See the questions, and the answer explanations, online [studentscores.collegeboard.org](https://studentscores.collegeboard.org)

© 2017 The College Board. College Board, SAT, and the acorn logo are registered trademarks of the College Board. PSAT is a trademark owned by the College Board. PSAT/NMSQT is a registered trademark of the College Board and National Merit Scholarship Corporation. All other marks are the property of their respective owners. Visit the College Board on the web: [collegeboard.org](https://collegeboard.org).

Khan Academy is a registered trademark in the United States and other jurisdictions.

Ima B. Student Fall 2017, 9th Grade

#### Subscore

- COE Command of Evidence
- WIC Words in Context
- EOI Expression of Ideas
- SEC Standard English Conventions
- HOA Heart of Algebra
- PSD Problem Solving and Data Analysis

#### Key

- ✓ Correct
- Omitted
- U Unscorable
- X Multi-Grid/Incorrect
- ■ ■ Easy
- ■ ■ Medium
- ■ ■ Hard

#### Cross-Test Score

- HSS Analysis in History/Social Studies
- SCI Analysis in Science

00865-005 160041904

---

# About the College Board

The College Board is a mission-driven not-for-profit organization that connects students to college success and opportunity. Founded in 1900, the College Board was created to expand access to higher education. Today, the College Board's membership is made up of over 6,000 of the world's leading educational institutions and is dedicated to promoting excellence and equity in education. Each year, the College Board helps more than seven million students prepare for a successful transition to college through programs and services in college readiness and college success—including the SAT® and the Advanced Placement Program®. The organization also serves the education community through research and advocacy on behalf of students, educators, and schools.

For further information, visit [collegeboard.org](https://collegeboard.org).